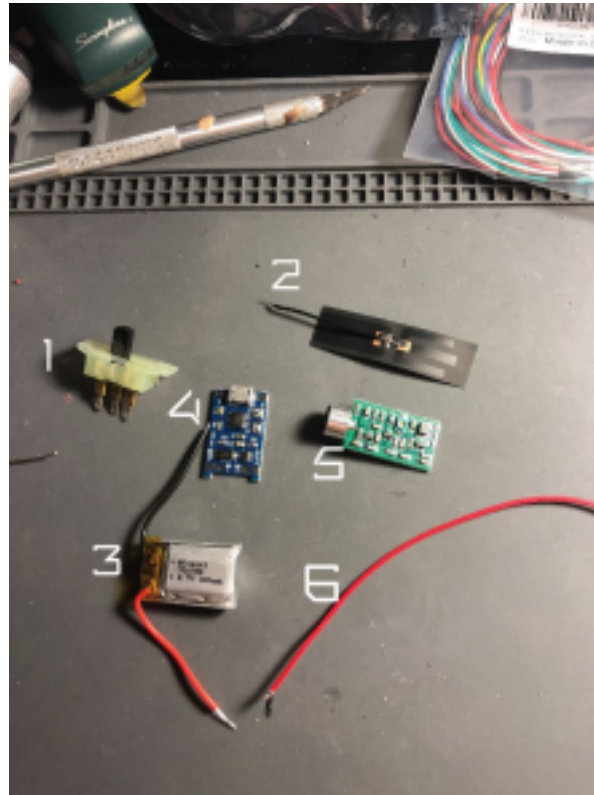


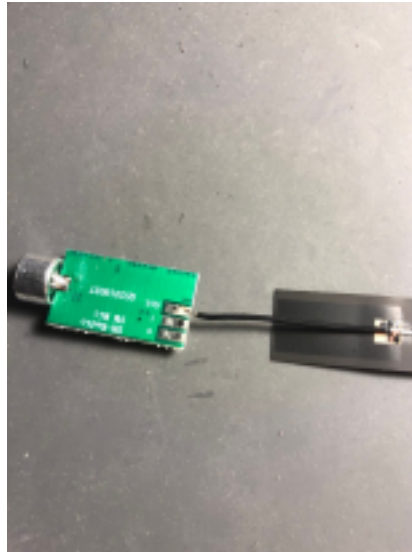
Saibamaze April 2020
Mini FM Transmitter Instruction Guide

PARTS:



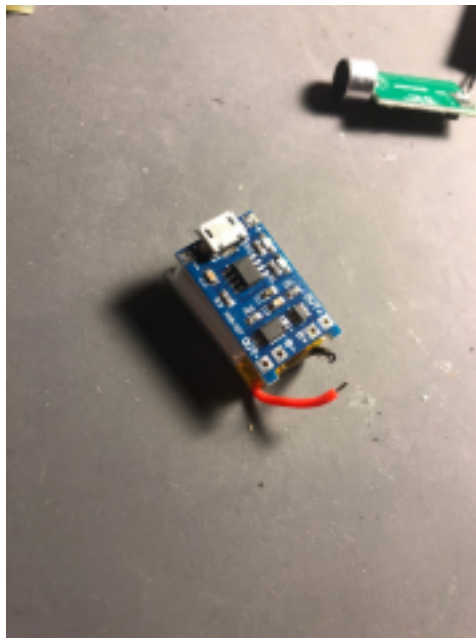
1. 3 prong switch or any power switch
2. Antenna
3. 150mah 3.7v lipo
4. TP4056 Lipo Charger
5. Micro FM Transmitter .7-9V 88MHZ-108MHZ
6. Wire
7. Hot glue (not pictured)
8. Soldering gun/solder (not pictured)

STEP 1



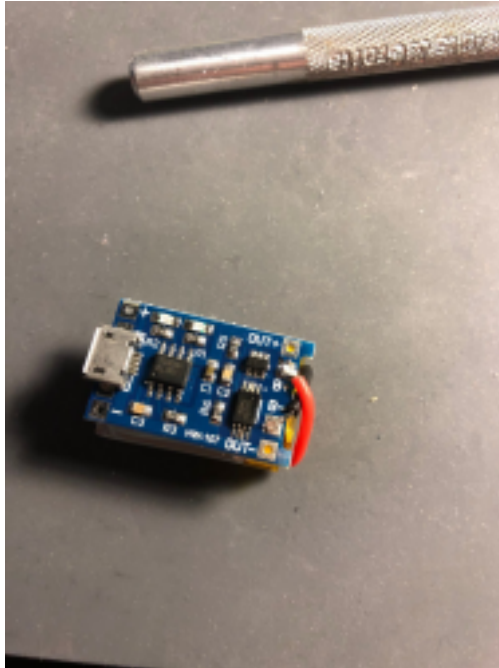
Solder the antenna to the point on the FM transmitter labeled “Ant”.

STEP 2



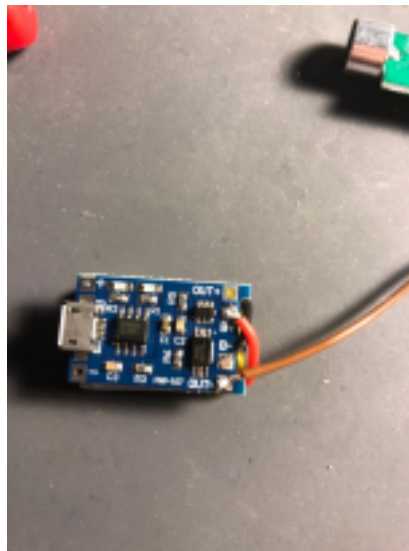
Glue the lipo to the bottom of the TP4056, and trim the wires down to save space.

STEP 3



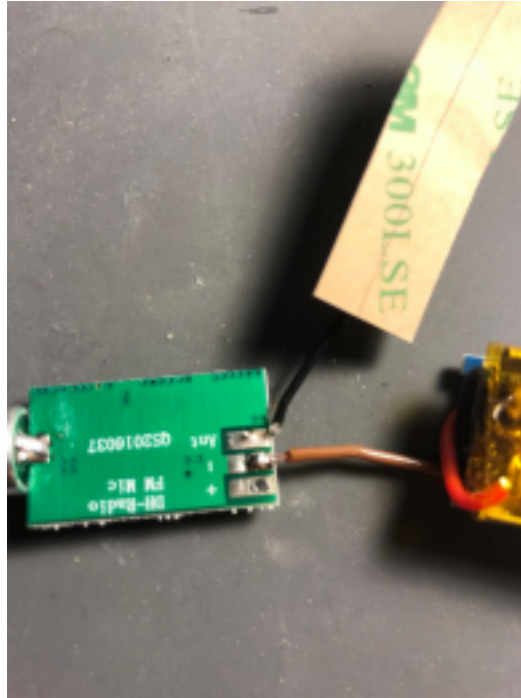
Solder the positive wire(red) from the lipo to B+ on the TP4056 charger, and the negative(black) to the B- on the TP4056

STEP 4



Solder some wire about 2 inches in length to the OUT- on the charger

STEP 5



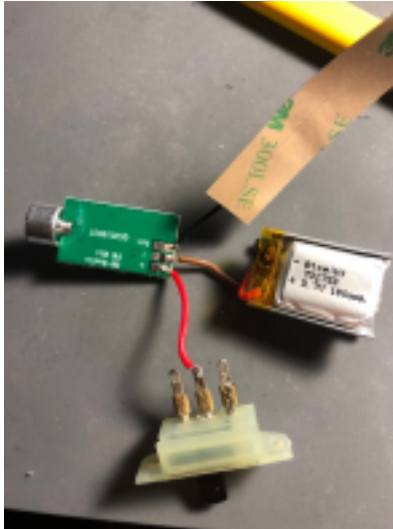
Solder the wire from STEP 4 to the - point on the FM transmitter.

STEP 6



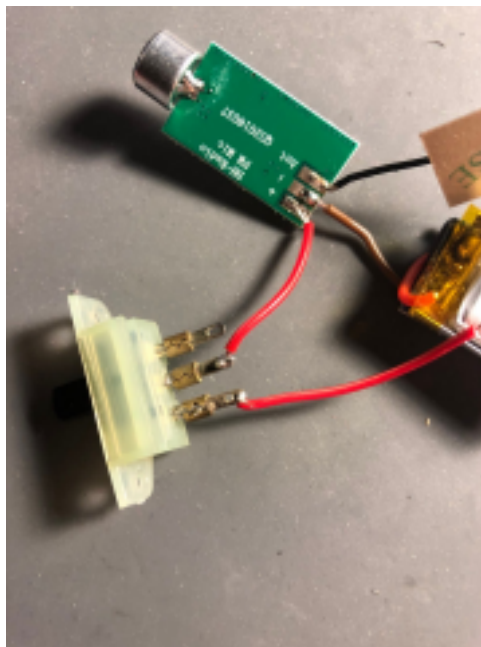
Solder a wire of around 1 inch in length to the + point on the FM transmitter.

STEP 7



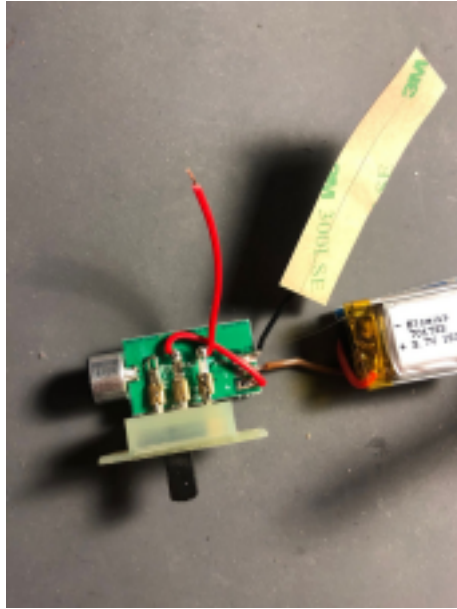
Solder the other end of the wire from STEP 6 to the middle prong of the power switch.

STEP 8



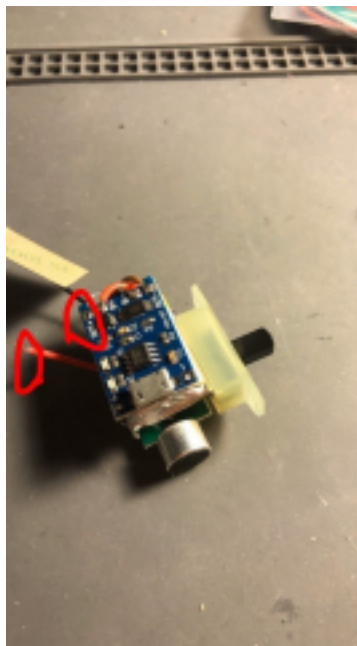
Solder some wire about 2 inches in length to one of the side prongs on the power switch (the side you solder it to determines which side will turn it on, its arbitrary).

STEP 9

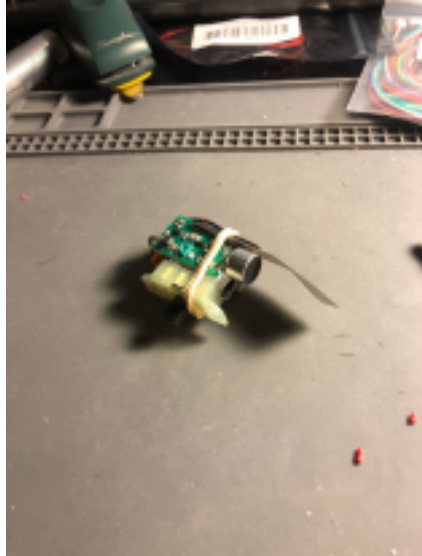


Glue the power switch to the bottom of the FM transmitter.

STEP 10



Glue the FM transmitter to the other side of the lipo. Then, solder the wire from STEP 8 to the OUT+ on the TP4056. This completes the circuit.



HOW TO OPERATE:

1. Turn the device on and place close to a radio, with the microphone facing the speaker.
2. Slowly search for channels on the radio until you hear feedback or a loud screeching noise. You have now just tuned into the transmitter channel.
3. Leave the transmitter in a concealed place to spy on conversations, or broadcast your message to anyone tuned in.

NOTE: A higher voltage battery (up to 9v) and/or a longer antenna will give you a wider broadcasting range.

NOTE: There is a small dial on top of the transmitter that you can turn with a small flathead to change the transmitting frequency of the transmitter.